

The White Cockade* Scottish Reel

Dances with Jacobite names, like *The White Cockade*, are believed to have been composed by the many fiddlers in Scotland. After the 1745 rebellion, the pipes were banned. The Chiefs had their own fiddlers and the dances usually depict a famous battle, an event, or a place name.

Records: Scottish Dance Time Album Volume 4, SMT 70-31, Jimmy Blue and His Scottish Band Volume 2, RCA-LSA 3110; or any eight-time 32-measure Reel in 4/4 meter.

Formation: Longway Reeltime dance. A four-couple set involving three couples in each 32 measure repetition. Top of set is indicated by left shoulder of first man.

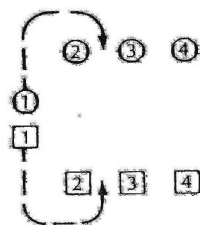
Position: Feet in first position, hands by side.

Steps: Skip change step, pas de basque, slip step, setting.

Meter 4/4 • Directions are same for man and lady.

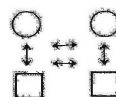
Measures

- 1-8 Dance begins with honors to partner, men bow, ladies curtsey. First, second, and third couples set and cross over with two skip change steps giving right hands, then set and cross back with two skip change sets to original places, again giving right hands.
- 9-16 First couple lead down the middle and up again to top place in the middle of the dance. (Eight skip change steps.)
- 17-20 First couple cast off to second place on own side. Second couple step up on measures 19-20. (Four skip change steps.)



- 21-24 First and third couples dance four hands round to left. (Eight slip steps.)
- 25-32 Second and first couples dance rights and lefts with eight skip change steps.

Man = □
Lady = ○



Repeat, having passed a couple.

(From Preston, *24 New Country Dances for the Year 1797*)

* This dance is used by the permission of the Royal Scottish Country Dance Society, 12 Coates Crescent, Edinburgh, Scotland, EH3 7AF. Patron—Her Majesty The Queen; President—The Earl of Mansfield; Secretary—Miss M. M. Gibson. Permission granted April 16, 1986.

Note

Dance is repeated from second position, now involving third and fourth couples. Couple at the top stands and waits. At the end of the second sequence (32 measures), original first couple slips below the fourth couple, who now moves up. A new top couple starts the next 32 measures, or the third sequence. Once at the bottom of the set, the top couple becomes the new first couple.